

CT Scanner



# CT NEWS

The *Stellenbosch CT scanner facility newsletter*  
"more than just a scan"

Nov/Dec 2016

## In This Issue

- Welcome
- Springbok research
- Publication highlight
- Guess the X-ray
- Special offers: analysis services
- Acknowledgements
- Advertisement

## CT Data bank

This is our bank for long term storage and sharing of your CT data.

There are different options based on if you want to keep your data private (monthly charge) or share it with others (then its free for you, but others must pay us), and the database of open-access scans will allow anyone to purchase CT data, for any and all kinds of CT data, in biology, materials science, engineering, geological and other types of data.

If you are in need of some kind of data, send us your request we will source a sample, scan it and send the data to you and keep it in the data bank for future users.

<http://blogs.sun.ac.za/ctscanner/imagenalysis/>

## Welcome

Welcome to our last newsletter of the year. As always, thank you for your valued support during 2016. It's been a roller-coaster year but we came out on top. Have a great festive season and we look forward to working with you even more in 2017.

Please note the facility is open until 15 December 2016 and re-opens on 9 January 2017.

Please take the time to share this newsletter as much as you can, we really appreciate it.

## Springbok research

The Springboks lost to Italy last weekend, so we decided it is worth it to investigate what is wrong. We start with the basics and investigate the springbok head first.

No actually this is a joke, but the scan does form part of a research project with a more serious goal.



**Springbok research: we hope to find out what is wrong with the Springboks at the moment**

## Publication highlight

This invited paper was recently published in PHYSICS PROCEDIA and includes a unique analysis method to highlight necking behavior in tensile specimens, and also monitor pore shapes after tensile testing.

### Deformation Behavior and Microstructure of Ti6Al4V Manufactured by SLM

Read it here:

<http://www.sciencedirect.com/science/article/pii/S1875389216301870>

## Special offers: analysis

### Book analysis sessions at half price

Analysis sessions are now half price until end of 2016. Make use of this special offer to get all your data segmented and analyzed.

## Contact Us

**Staff scientist – Anton du Plessis, PhD**

[anton2@sun.ac.za](mailto:anton2@sun.ac.za)

**Analyst – Stephan le Roux, MSc**

[lerouxsg@sun.ac.za](mailto:lerouxsg@sun.ac.za)

021 808 9389

**Physical address for sample deliveries:**

**CT Scanner Facility, Room 1046**

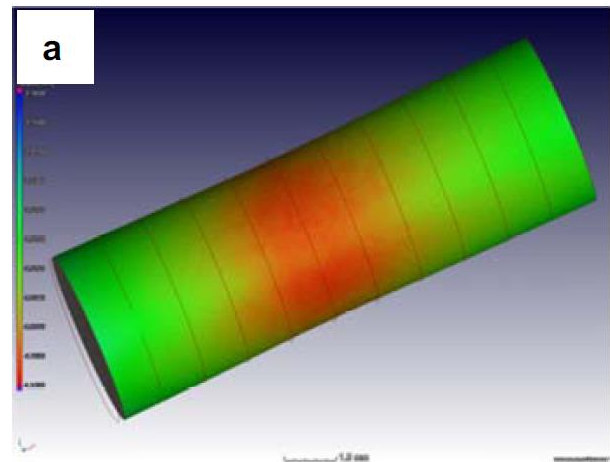
**PO Sauer building - Dept Forestry and Wood Science**

**Bosman Street, Stellenbosch 7602**

[www.sun.ac.za/ctscanner](http://www.sun.ac.za/ctscanner)

We are members of IntACT, the International Association for Computed Tomography

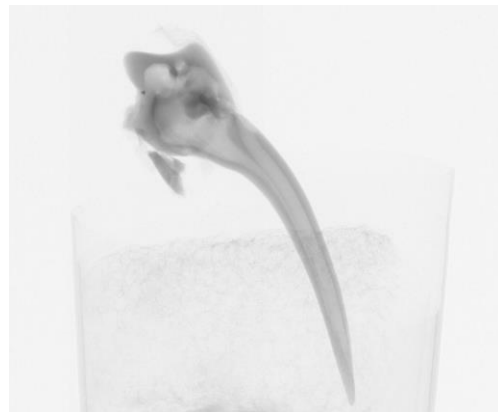
<http://www.intact-tomo.org/>



**This is an image of the central cylindrical section of a tensile sample (rod) with a colour variance analysis showing the region of largest deformation from an ideal cylinder shape in red/orange, ie. The narrowing "necking" region due to 9% elongation.**

## Guess-the-X-ray

The solution to the last "guess the X-ray" image was a human skull - and the aim was to generate an accurate model for digital facial reconstruction, a technique used in forensics. Here is this month's X-ray image brainteaser, let me know if you think you know the solution:



**Can you see what this X-ray is ?**

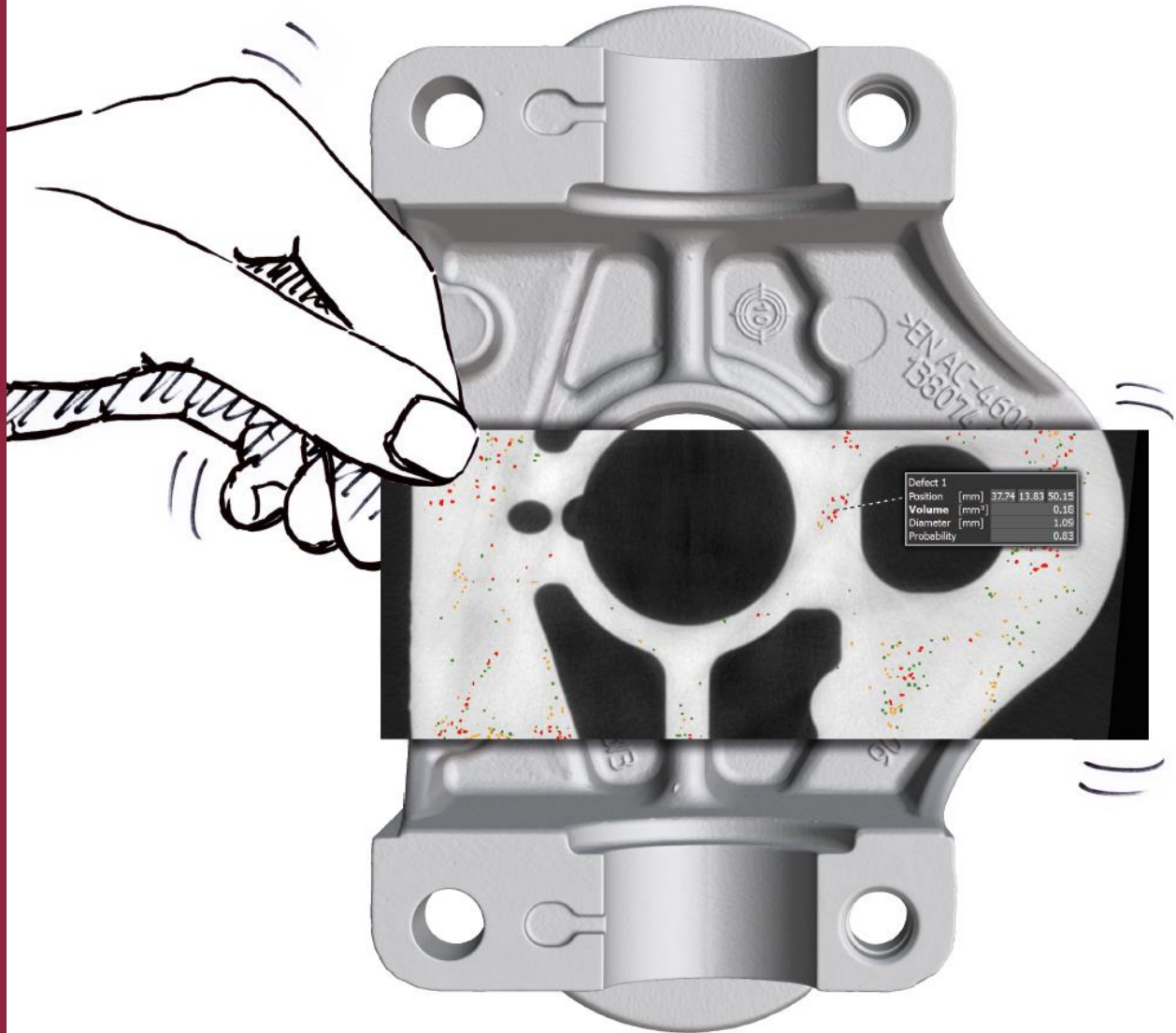
## Acknowledgements

The CT scanner equipment acquisitions were made possible with grants from the National Research Foundation and Stellenbosch University. The Department of Science and Technology Internship program is also acknowledged for its support of this facility. We encourage and welcome any form of sponsorship or support in order to keep delivering the best quality.

**To subscribe or unsubscribe from this mailing list, please send an email with the subject line "subscribe" or "unsubscribe" to [anton2@sun.ac.za](mailto:anton2@sun.ac.za)**

# FIND MORE, FIND FASTER

THE NEW VGSTUDIO MAX 3.0



When you analyze CT data with the new *VGStudio MAX 3.0*, you can inspect your products faster, find out more, and develop more cost-effectively. For example, you can discover pores, voids, and inclusions which would have otherwise remained hidden.\*

Want to learn more? Get in touch!  
Or visit [www.volumegraphics.com](http://www.volumegraphics.com).

\* Requires the Porosity/Inclusion Analysis Module



**Volume Graphics GmbH**  
Speyerer Straße 4-6 | 69115 Heidelberg, Germany  
Phone: +49 6221 73920-60 | Fax +49 6221 73920-88  
[sales@volumegraphics.com](mailto:sales@volumegraphics.com) | [www.volumegraphics.com](http://www.volumegraphics.com)